

Applied Learning

Learning to Learn via Application
Cultivating Aspiration via Learning



<http://www.edb.gov.hk/apl>

Our Belief

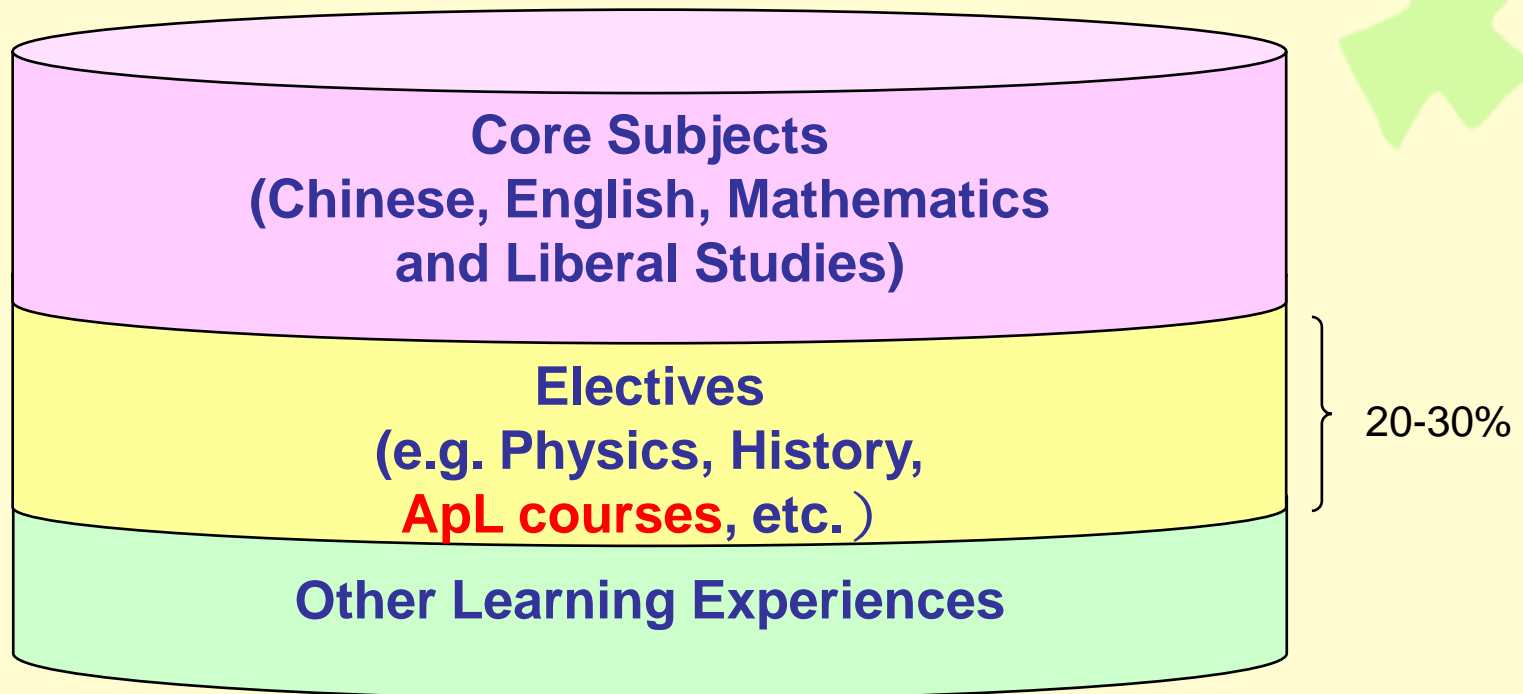
- All students have the **ability to learn**
- Different students have different **learning styles**
- No single curriculum can match with all the students' learning **needs**
- **Learning skills** and **employability** can be enhanced through different learning approaches

What is Applied Learning?

- Applied Learning (ApL) aims at enabling students to understand fundamental concepts and theories through **application and practice**, and to develop their generic skills in authentic context.
- The design principle of ApL is the same as that of other school subjects, with equal emphasis on the **development of knowledge, skills and attitudes**.
- ApL is an essential component of the new senior secondary (NSS) curriculum. Students may choose up to three electives including ApL courses according to their **interests, aspirations and aptitudes**.

Position of ApL in the NSS Curriculum

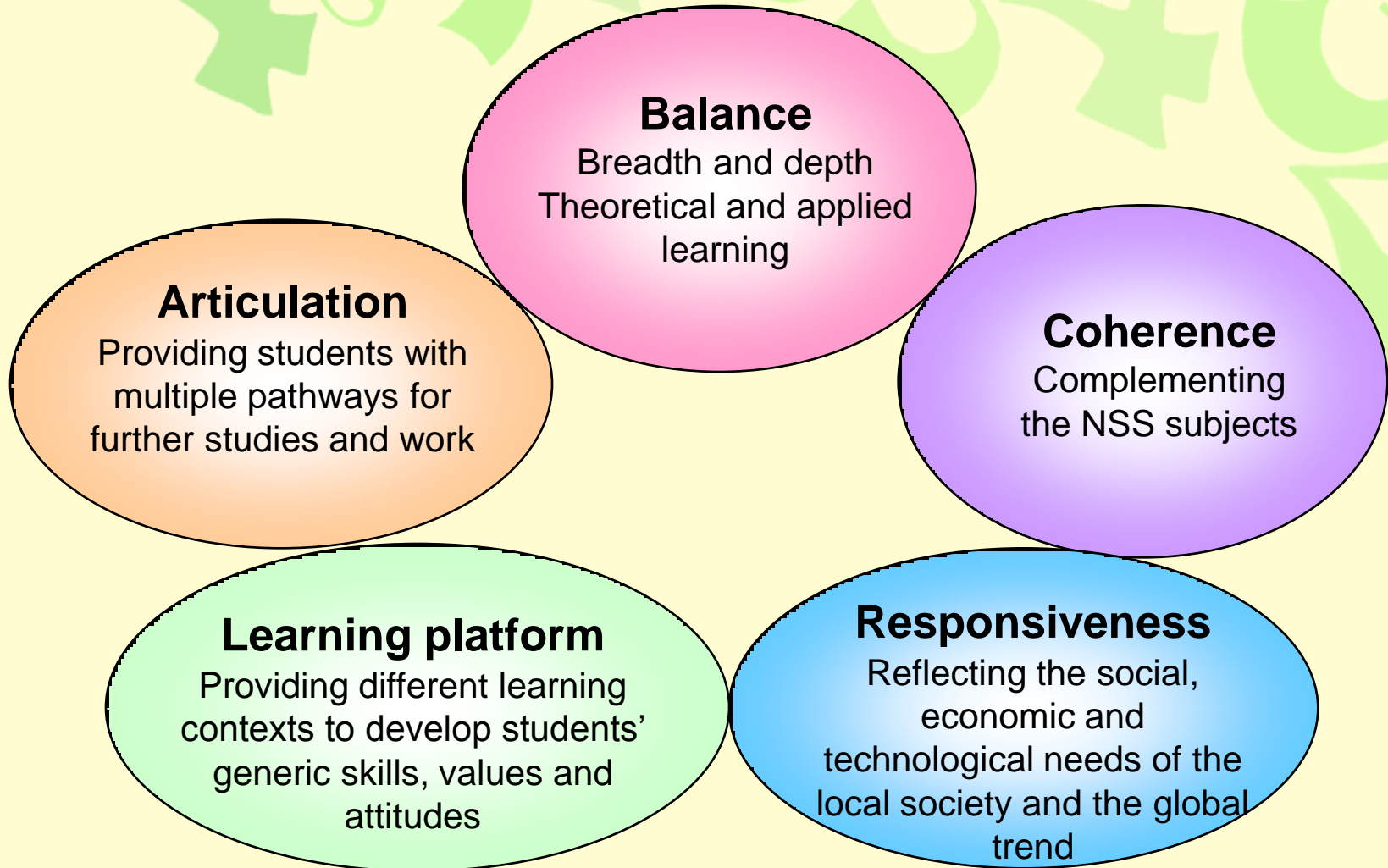
ApL is an **essential component** of the NSS curriculum, complementing the NSS subjects



Areas of Studies

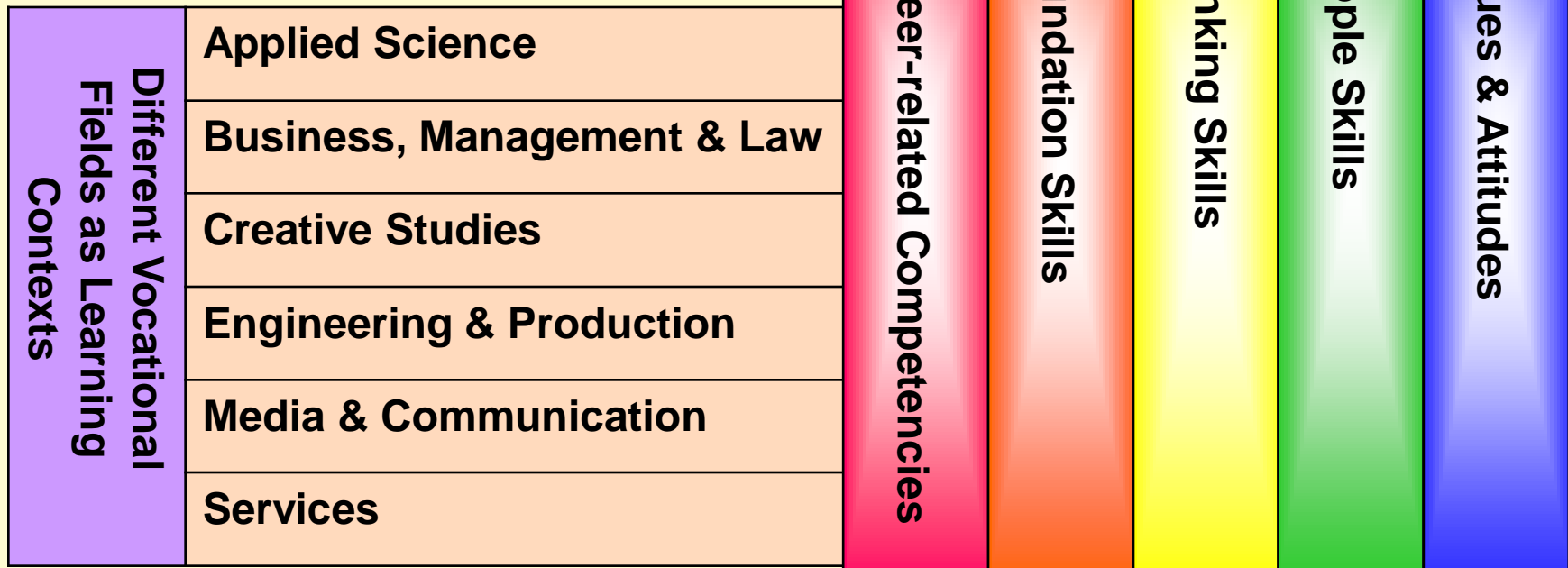
- Applied Science
- Business, Management & Law
- Creative Studies
- Engineering & Production
- Media & Communication
- Services

Curriculum Design of ApL

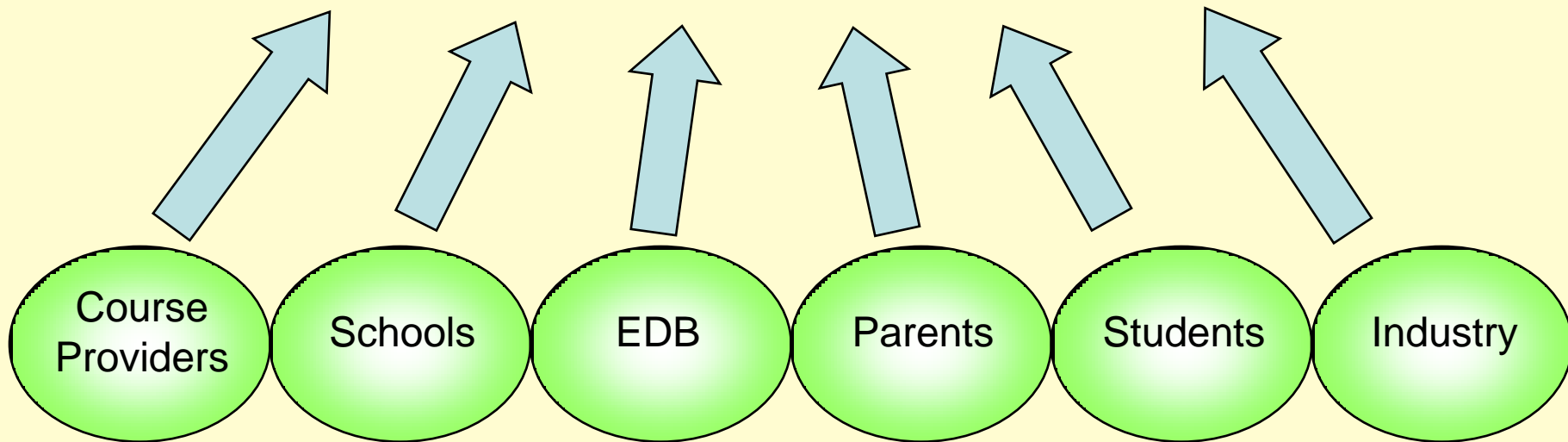
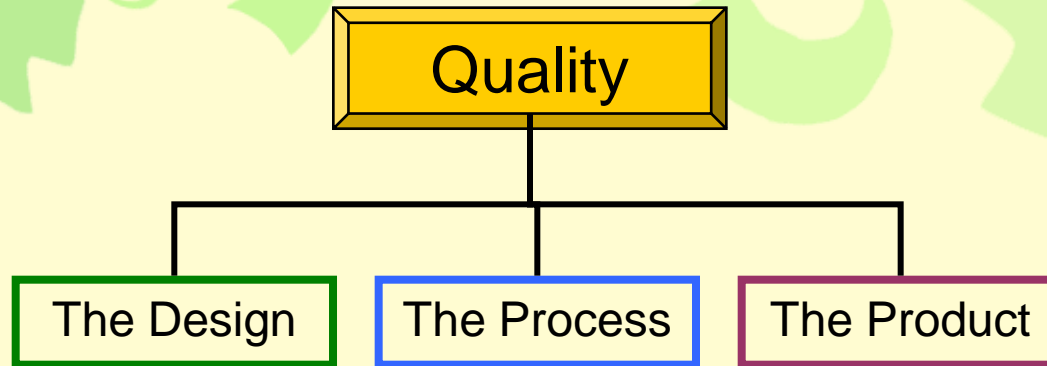


Curriculum Framework of ApL

Life-long learning
for further studies and/or work



Quality Assurance of ApL



Current Recognition of ApL

- Successful completion of one quality-assured ApL course will be recognised as comparable to **one HKCEE subject pass** accepted by the **Civil Service Bureau** as comparable to **a pass in the HKCEE** (excluding Chinese Language and English Language) for civil service appointment purpose.

Proposed Recognition for ApL in the NSS Curriculum

- Three levels of performance: ‘unattained’, ‘attained’ and ‘attained with distinction’
- **HKDSE** transcript will record the learning outcomes for ApL course(s) and give recognition to student’s level of performance